

Moving Individuality.



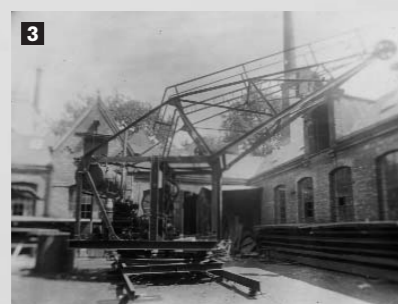
HÜTTER
AUFZÜGE

From the ground floor up: the history of the first-class elevator.

Ours begins in 1876 – but not with an elevator. It was a winch which Heinrich Hütter constructed for his neighbours at the port of Hamburg. 1882, embracing new technology and looking for engineering challenges, he installed the first electric lighting system for Hamburg's town hall market square. With Hütter things are always on the up.

After building its first elevator at his new Eilbek site in 1886, Hütter steadily developed into a leading international enterprise. Setting standards in innovation, quality, and individual design.

1 SPECIALITÄT:
Winden aller Art.
Electrische Winden.
Aufzüge (Fahrstühle)
für Person- und Lastbeförderung
mit Elekt-, hydraulischen oder
elektrischen Betrieb.
Paternoster-Personen-
Fahrstühle
Drehkrane
feststehend und fahrbar.
Laufkrane
für Hand- und Kraftbetrieb.
Bockkrane.
Velocipedkrane.
Elevatoren.
Transmissionen
System Seilers.
Acetylen-Gas-Apparate
D. R. G. M.
Lieferung und Aufstellung
von
Electromotoren,
Gasmotoren,
Dampfmaschinen.
Dreh- und Hobelarbeiten
in allen Größen und Längen
bei billigster Berechnung.
Reparatur-Werkstatt.



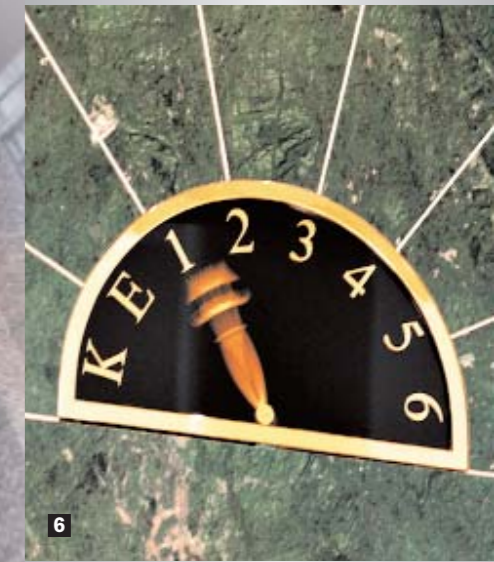
1876: Heinrich Hütter founds Maschinenfabrik H. Hütter Jr.
1886: The first elevator is built.
1943: The company premises are totally destroyed in the Second World War.
1955: Heinz Hütter, grandson of the founder, takes over the company.
1972: Relocation to Glinde industrial estate.
1989: Achim Hütter, the fourth generation, takes over management of the business.

1997: Hütter-Aufzüge GmbH Berlin is founded.
1999: Bernd Hütter enters the company as Managing Director.
2001: 125th anniversary.
2006: Hütter-Aufzüge GmbH Niedersachsen is founded.

1 Letter paper, 1880
2 Paternoster, 1912
3 Workshop yard on Hammer Steindamm, 1920



Success runs in the family (from left to right): Johann Heinrich Hütter Jr; Heinrich Hütter; Mercedes Hütter, née Vogeler; Heinz Hütter; Swantje Hütter, née Mundt; Achim Hütter; Bernd Hütter



Gewerbesiedlungsgesellschaft:
4 Passenger/goods elevator with a capacity of 5,200 kg in a glazed steel shaft on the outside of a historical building.
Störtebekerhaus:
5 Twin passenger elevator in a classical art nouveau staircase.
6 True to style in every detail: classic floor indicator made from brass.
Urban villas in Nienstedten:
7 High-quality square elevator in a round staircase.
Office block, Hohe Bleichen:
8 Perfect integration: panoramic elevator in a glazed steel shaft built into an existing staircase.

Our standard is to think beyond the standard.

To us, technical perfection is a matter of course. And yet it is not everything: individuality is another element which is hardly less important. It is the combination of atmosphere and function, the harmony between tradition and innovation.

A solution which is as functional as it is fascinating demands a very particular approach. Because we manufacture most of our components ourselves, we are able to satisfy customers' wishes and technical requirements with precision.

Employees with many years experience guarantee a constantly high level of quality, while computer-controlled machining centres ensure maximum dimensional accuracy.

Schütt Stahl:

1 Elevator with hexagonal car, glazed steel shaft in a round staircase.

Dorint Hotel:

2 Triple passenger elevator with high quality wooden interior.

Fuhlentwiete:

3 Twin passenger elevator with car walls and ceilings made from clear laminated safety glass.

Störtebekerhaus:

4 Car with suspended ceiling made from satin-finish laminated safety glass with a brass frame.



1



2



3



4



5



6



7

König-Heinrich-Weg:

5 Standard car, stainless steel version.

SAP Training Centre:

6 Passenger elevator with laminated safety glass doors and satin-finish laminated safety glass portal.

Dockland:

7 Pure design: generous, sand-blasted stainless steel surfaces with integrated lighting in the glass floor, air conditioning, and a vision panel.

Haus der Wirtschaft:

8 Passenger elevator with laminated safety glass window and elevated single-sheet safety glass panels incorporating etched logo.

We develop solutions made to measure – for every shaft:

- | | |
|---------------------------------|----------------------------|
| Passenger elevators | Elevators for the disabled |
| Goods elevators, 5 to 20.000 kg | Bed elevators |
| Machine roomless elevators | Railway station elevators |
| Observation elevators | Special elevators |
| Panoramic elevators | Goods only elevators |
| Inclined elevators | Underfloor elevators |
| Car elevators | Dumbwaiters |



When architects open up new routes, we're with them side by side.

Design and creativity are not necessarily things you would associate with elevators. But with us, it is a combination which we master. Together with property developers and architects, we develop solutions which fit into the overall design concept.



1



3



4



5



6

Hamburg state office in Berlin:

1 Panoramic elevator in an atrium.

Inclined elevator in Ganzenhoef underground station, Amsterdam:

2 Inclined elevator with highly transparent car, parallelogram car.

HHLA administration, Holländischer Brook:

3 Panoramic elevator in an older building.

Dockland:

4 Winner of numerous architectural awards with two inclined elevators as a group, at a speed of 2.5 m/s.

Dockland:

5 Car with glass rear wall, glass ceiling, and backlit glass floor; side walls with raised, enamelled glass panels.

Schütt Stahl:

6 Passenger elevator with hexagonal glass car and direct hydraulic drive.

From the conditions in the shaft, to the best way of controlling the elevator, to the fine-tuning of form, interior and design details – all these are stages in the development of perfectly integrated solutions our elevators are a design element in their own right.



Often people don't know where to look in an elevator. But not in ours.

To us, a well-made elevator is more than just a mechanical means of transport. It is a space where people like to be, a piece of mobility which appeals to them. To make you feel comfortable in an elevator several factors come into play. Colour and form, naturally, and also the materials used and the types of finish.



Alsterhaus:
1 Modern car with raised frosted glass, mirror panels and a natural stone floor.

Dorint Hotel:
2 Details of a special operating panel with integrated glass display cabinet and card reader. In-flight entertainment: 17" flat screen on the rear wall.

Victoriahaus:
3 Elaborate glass car in a steel/glass shaft. Floor lined with a single piece of marble.

Lighting, ergonomics and acoustics are also important elements which can be used to influence the atmosphere in a car. We place great value on visual appeal and aesthetics – that includes the overall design as well as individually manufactured operating elements.



Residential building, Koppel:
4 Elevator car with horizontally arranged panels built from cherry wood and mirrors.

HHLA administration, Holländischer Brook:
5 Individual design: car walls manufactured from perforated metal.

Störtebekerhaus:
6 Twin passenger elevator with car walls and ceilings made from clear laminated safety glass.

Dockland:
7 Glass-bead-blasted operating panel, inset and separately lit.

Warburg Bank Headquarters:
8 Illuminating: car operating panel with integrated lighting.



We make elevators that have never existed before.

The more unusual the conditions in the elevator shaft, the more interested we become. That is because we consider the development of innovative special solutions to be the best opportunity for demonstrating our expertise. Not only have we created Germany's narrowest and highest elevators, we have also set standards in the fields of contact-free energy transfer and radio control. We also develop designs which have never existed before. Take the inclined elevator for example, an alternative to the traditional vertical elevator which opens new possibilities for mobility in many properties.



Inclined elevator in Ganzenhoef underground station, Amsterdam:

1 Inclined elevator for disabled access to the platform, with glazed steel shaft and the dimensions of an escalator.

Inclined elevator, Dockland:

2 Vibration-isolated track without trailing cables, incorporating radio control and inductive energy transfer.

Koppel:

3 Germany's narrowest elevator, developed for an extremely narrow shaft.

Deutsches Schauspielhaus:

4 Germany's highest elevator with a car and door height 7.5 metres.

Gewerbesiedlungsgesellschaft:

5 Goods elevator with a capacity of 5.000 kg, 1.6 m/s. Adjacent entrances with vertical car door and swing door on the landing.

Globetrotter:

6 Rotation system for displaying canoes.

7 Innovative presentation of goods in our "canoe paternoster".



We adapt yesterday's technic to create tomorrow's solution.

Hochallee:
Space-optimised integration:
glazed steel shaft in
a historical staircase.



Manufacturing a new elevator is a challenge. But modernising a traditional elevator in an older building and equipping it with modern technology is an even tougher task.

Developing a modern solution in conditions established 100 years ago is a task for experienced specialists. One of the main reasons for this is that safety plays such an important role when modernising older elevators.



Poststraße:
3 Modernised passenger
elevator with glass housing
in an art nouveau building.



Sprinkenhof:

- 1 Glass car illuminated from outside, with horizontal divisions.
- 2 Brass – a material with tradition. Here used for the operating panel and glass fixation.



The same goes for service: modern technology for maximum safety.

Our principle is simple: an elevator which works around the clock demands a service team which works around the clock. Our emergency service control room is kept up to date with all the important parameters at all times by remote diagnostics. Help is at hand in no time: either from our service vehicle which is equipped with all the necessary spare parts or by means of computer-assisted remote maintenance via the data link.

Our service, however, is not just for emergencies. Regular protective maintenance, a personal elevator maintenance service and an elevator emergency service can be arranged at any time as part of an individual service agreement.

Frequency converter / DCP

Car doors / light curtain

Shaft information

Link to building automation system

Control system

Emergency control room

Connection to fire alarm control

Maintenance control support





HÜTTER-AUFZÜGE GmbH

Siemensstraße 11
21509 Glinde
Germany
Telephone +49 40 72 77 66-0
Telefax +49 40 72 77 66 55
info@huetter-aufzuege.de

HÜTTER-AUFZÜGE Service GmbH

Hinschenfelder Stieg 17
22041 Hamburg
Germany
Telephone +49 40 69 65 19-0
Telefax +49 40 69 65 19 11
service@huetter-aufzuege.de

HÜTTER-AUFZÜGE GmbH Berlin

Zillestraße 17
10585 Berlin
Germany
Telephone +49 30 34 10 475
Telefax +49 30 34 70 99 01
berlin@huetter-aufzuege.de

HÜTTER-AUFZÜGE GmbH Niedersachsen

Major-Hirst-Straße 11
38442 Wolfsburg
Germany
Telephone +49 53 61 8 97 48 40
Telefax +49 53 61 8 97 48 49
post@huetter-aufzuege.de



HÜTTER AUFZÜGE

www.huetter-aufzuege.de